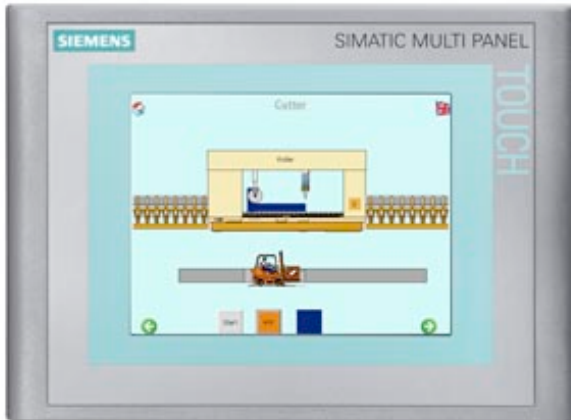


as of 01.01.2015 the product is blocked for delivery and is no longer available as new part. For information on the successor see SIMATIC news Entry ID: 62977695. For further questions, the familiar contact partners are available. SIMATIC MP 177 6" Touch Multi Panel with retentive memory 5.7" TFT display 2 MB configuration memory, configurable with WinCC flexible 2008 Compact or higher



General information	
Customer-specific configuration	Yes
Display	
Design of display	TFT
Screen diagonal	5.7 in
Color display	Yes
Number of colors	65 536
Resolution (pixels)	
• Horizontal image resolution	320 Pixel
• Vertical image resolution	240 Pixel
Backlighting	
• MTBF backlighting (at 25 °C)	50 000 h
Control elements	
Control elements	Touch screen
Keyboard fonts	
• System keys	No
• alphanumeric keyboard	Yes; Onscreen keyboard
• hexadecimal keyboard	Yes; Onscreen keyboard

Touch operation	
• Design as touch screen	Yes; analog, resistive
Connection type	
• Type of connection for mouse/keyboard/barcode reader	USB / USB / USB
Installation type/mounting	
Mounting position	vertical
Supply voltage	
Type of supply voltage	DC
Processor	
Processor type	RISC 32-bit, 520 MHz
Memory	
Type of memory	Flash / RAM
Memory available for user data	2 Mbyte
Capacity of main memory, max.	128 Mbyte
Time of day	
Clock	
• Type	Hardware clock, battery backup, synchronizable
• retentive	Yes
• synchronizable	Yes
Interfaces	
Interfaces/bus type	1 x RS422, 1 x RS485, 1 x Ethernet (RJ45) (max. 12 Mbit/s)
Number of RS 485 interfaces	1; together with RS422
• Transmission rate, max.	12 Mbit/s
Number of USB interfaces	1; Up to 1 GB
Multimedia card/SD card slot	combined, from E-status 016 in connection with WinCC flexible 2008 SP1, MMC max. 128 MB / SD max. 512 MB
With software interfaces	No
Industrial Ethernet	
• Industrial Ethernet interface	1 x Ethernet (RJ45)
• Industrial Ethernet status LED	2
Protocols	
Supports protocol for PROFINET IO	Yes
PROFIsafe	No
PROFIBUS	Yes
MPI	Yes
Protocols (Ethernet)	
• TCP/IP	Yes
Protocols (terminal link)	
• Sm@rtServer	Yes

Further protocols	
• EtherNet/IP	Yes
• MODBUS	Yes
• other bus systems	Yes
EMC	
Emission of radio interference acc. to EN 55 011	
• Limit class A, for use in industrial areas	Yes; EN 61000-6-4, interference emission: Intended for use in industrial areas.
Degree and class of protection	
IP (at the front)	IP65
NEMA (front)	NEMA 4, NEMA 4x, NEMA 12 (when installed)
IP (rear)	IP20
Standards, approvals, certificates	
Certifications	CE, GL, FM Class I Div. 2, cULus, C-TICK, NEMA 4, NEMA 4x, NEMA 12
cULus	Yes
EMC	The product is designed for use in industrial environments. When used in residential areas, the emission of radio interference according to limit class B of EN 55011 must be ensured. For further information refer to the user documentation
Suitable for safety functions	No
Marine approval	
• Germanischer Lloyd (GL)	Yes
• American Bureau of Shipping (ABS)	No
• Bureau Veritas (BV)	No
• Det Norske Veritas (DNV)	No
• Lloyds Register of Shipping (LRS)	No
• Nippon Kaiji Kyokai (Class NK)	No
• Polski Rejestr Statkow (PRS)	No
Use in hazardous areas	
• ATEX Zone 2	No
• ATEX Zone 22	No
• FM Class I Division 2	Yes
Ambient conditions	
Ambient temperature during operation	
• min.	0 °C
• max.	50 °C
Ambient temperature during storage/transportation	
• min.	-20 °C
• max.	70 °C
Relative humidity	

- Operation, max. 90 %

Operating systems

pre-installed operating system	Windows CE (Version 5)
--------------------------------	------------------------

Configuration

Message indicator	Yes
Alarm system (incl. buffer and acknowledgment)	Yes
Process value display (output)	Yes
Process value default (input) possible	Yes
Recipe management	Yes

Configuration software

- | | |
|------------------------------------|--|
| • Configuration tool | WinCC flexible Compact Version 2008 SP1 or higher (to be ordered separately) |
| • STEP 7 Basic (TIA Portal) | No |
| • STEP 7 Professional (TIA Portal) | No |
| • WinCC flexible Compact | Yes |
| • WinCC flexible Standard | Yes |
| • WinCC flexible Advanced | Yes |
| • WinCC Basic (TIA Portal) | No |
| • WinCC Comfort (TIA Portal) | Yes |
| • WinCC Advanced (TIA Portal) | Yes |
| • WinCC Professional (TIA Portal) | Yes |

Languages

Online languages

- | | |
|--------------------------------------|---|
| • Number of online/runtime languages | 5 |
|--------------------------------------|---|

Project languages

- | | |
|-------------------------|----|
| • Languages per project | 32 |
|-------------------------|----|

Functionality under WinCC (TIA Portal)

Libraries	Yes
Task planner	Yes
Help system	Yes
• Number of characters per info text	70

Message system

- | | |
|--------------------------------------|-------|
| • Number of alarm classes | 32 |
| • Number of messages | 2 000 |
| • Bit messages | Yes |
| — Number of bit messages | 2 000 |
| • Analog messages | Yes |
| — Number of analog messages | 2 000 |
| • Telegram message procedure Alarm S | Yes |
| • System messages HMI | Yes |
| • System messages PLC | Yes |

• System messages, other (SIMATIC S7, Sinumerik, Simotion, etc.)	Yes
• Lines	1
• Number of characters per message	80
• Number of process values per message	8
• Acknowledgment groups	
— Number of acknowledgement groups	Yes
• Message indicator	Yes
• First/last value	Yes
Recipe management	
• Number of recipes	100
• Data records per recipe	200
• Entries per data record	200
• Recipe memory	32 KB integrated Flash, expandable
Variables	
• Number of variables per device	1 000
• Number of variables per screen	50
• Number of variables	1 000
• Type Date & Time	1 000
• Limit values	Yes
• Multiplexing	Yes
• Structures	No
Images	
• Number of configurable images	500
• Permanent window/default	Yes
• Start screen configurable	Yes
• Image selection by PLC	Yes
• Image number in the PLC	Yes
Image objects	
• Text objects	2,500 text elements
• Number of I/O fields per image	50
• Number of date/time fields	30
• Return	Yes
• Graphics object	Bit maps, icons, vector graphics
— Icons	500
Complex image objects	
• Status/control	With SIMATIC S7
• dynamic objects	Diagrams, bar graphs, sliders, analog display, invisible buttons
— Number of objects per project	500
— Number of curve diagrams per image	5
• Methods	Trend / profile

• Bar graphs	
— Number of bars per chart	5
• Sliders	
— Number of slides per image	5
• Pointer instruments	
— Number of analog indicators per image	5
• Limit value lines	Yes
• Number of alphanumerical fields	1 000
— alphanumeric fields per image	50
• Number of numerical fields	1 000
— numerical fields per image	50
• Number of password fields	1 000
• Number of visible switches per project	1 000
— visible switches per image	100
— hidden switches per image	100
• Number of status switches per project	1 000
— Number of status switches per image	100
• Number of selector switches per project	200
— Selector switches per image	100
• Number of signal lamps per project	1 000
— Signal lamps per image	100
Attributes for dynamic objects	
• Color change	Yes
• X/Y movement	Yes
• Hide	Yes
• Angle of rotation	No
Lists	
• Number of text lists per project	300
• Number of text lists per image	10
• Number of entries per text list	30
• Number of graphics lists per project	100
• Number of graphic lists per image	10
• Number of entries per graphics list	30
Security	
• Number of user groups	50
• Number of user rights	32
• Password export/import	Yes
Logging through printer	
• Recording/Printing	Alarms, report (shift report), color print, hardcopy
Transfer (upload/download)	
• Transfer of configuration	MPI/PROFIBUS DP, serial, USB, Ethernet, automatic transfer recognition

Process coupling	
<ul style="list-style-type: none"> • Connection to controller 	S5, S7-200, S7- 300/400, TI 505, Win AC, SINUMERIK, SIMOTION, Allen Bradley (DF1), Allen Bradley (DF485), Mitsubishi (FX), OMRON (LINK/Multilink), Modicon (Modbus), weitere Fremdtreiber siehe Kapitel "Systemkopplungen"
<ul style="list-style-type: none"> • S7-1200 	Yes
<ul style="list-style-type: none"> • S7-1500 	Yes
<ul style="list-style-type: none"> • S7-200 <ul style="list-style-type: none"> — PPI (point-to-point) — PPI network — MPI — PROFIBUS DP — Ethernet 	Yes
<ul style="list-style-type: none"> • S7-300/400 <ul style="list-style-type: none"> — MPI — PROFIBUS DP — PROFINET 	Yes
<ul style="list-style-type: none"> • S5 <ul style="list-style-type: none"> — PROFIBUS DP 	Yes
<ul style="list-style-type: none"> • TI 505 	Yes
<ul style="list-style-type: none"> • Allen Bradley (DF1) 	Yes
<ul style="list-style-type: none"> • Allen Bradley (DF485) 	Yes
<ul style="list-style-type: none"> • Mitsubishi (FX) 	Yes
<ul style="list-style-type: none"> • Mitsubishi (MP4) 	Yes
<ul style="list-style-type: none"> • Telemecanique (Uni-Telway) 	Yes
<ul style="list-style-type: none"> • OMRON (LINK/Multilink) 	Yes
<ul style="list-style-type: none"> • Modicon (Modbus) 	Yes
<ul style="list-style-type: none"> • GE-Fanuc (SNP) 	Yes
Functions	
<ul style="list-style-type: none"> • TAB sequence 	Yes
<ul style="list-style-type: none"> • Calculating functions 	Yes
<ul style="list-style-type: none"> • Animate 	Yes
Service tools/configuration aids	
<ul style="list-style-type: none"> • Clean screen 	Yes
<ul style="list-style-type: none"> • Touch calibration 	Yes
<ul style="list-style-type: none"> • Backup/Restore manually 	Yes
<ul style="list-style-type: none"> • Simulation 	Yes
<ul style="list-style-type: none"> • Device switchover 	Yes
Peripherals/Options	
<ul style="list-style-type: none"> Peripherals 	Printer, barcode reader
<ul style="list-style-type: none"> • SIMATIC HMI MM memory card: Multi Media Card 	Yes

<ul style="list-style-type: none"> • SIMATIC HMI SD memory card: Secure Digital memory card • USB memory 	Yes; WP gate is not supported.
Additional software components loadable	Yes

Dimensions

Width of the housing front	212 mm
Height of housing front	156 mm
Mounting cutout, width	198 mm
Mounting cutout, height	142 mm
Overall depth	45 mm

Weights

Weight (without packaging)	0.85 kg; max.
----------------------------	---------------

Other

free hotline	Yes
Warranty period	1 y; 10 years replacement from discontinuation
last modified:	02/27/2018